



MAXWILL INDUSTRIAL LIMITED

✉ hanson.dai@maxhelmet.com

info@maxhelmet.com

☎ +86 13823039383

🌐 www.maxhelmet.com

📍 NO. 32, HUANG SHA HE WEST ROAD,
LIAOBU TOWN, DONGGUAN CITY, GUANGDONG, CHINA.



www.maxhelmet.com



Wechat



WhatsApp

V
M
A
X
E
T



HELMET 26-27

INTRODUCTION

We are a rapidly growing sports goods enterprise, specializing in the design, development and manufacturing of bicycle helmets, ski helmets, skateboard helmets, speed ice skating helmets, equestrian helmets, water sports helmets and climbing helmets. We serve customers worldwide.

We are equipped with 5 EPS thermofusion machines, 3 vacuum plastic forming machines, 2 automatic painting workshops and 3 assembly lines. Our monthly production capacity reaches 50,000 helmets.

Our helmets have obtained certifications for various international safety standards, including US CPSC, ASTM F1447, ASTM F2040, ASTM F1849, as well as European CE EN1078, CE EN1077, CE EN1385, CE EN1384 and other standards. All products undergo strict testing before delivery. We firmly believe that quality is the lifeblood of our enterprise.

As a professional sports helmet supplier, we source raw materials globally and implement strict quality control in accordance with top international standards. We are committed to becoming a world-class quality supply chain and professional sports helmet provider in the sports and leisure industry.

We sincerely welcome customers from all over the world to cooperate with our factory.



CONTENTS

ROAD	03-16	WATER SPORTS	81-90
MTB	17-24	SKATEBOARD	91-96
E-BIKE	25-36	EQUESTRAIN	97-100
UNIVERSAL	37-42	CLIMBING	101-106
BMX/DOWNHILL	43-48	SHORT TRACK SPEED	107-108
CHILDREN	49-56	TRACK TIME TRAIL	109-110
SKI/SNOWBOARD	57-80	BASEBALL	111-112



HELMET DEVELOPMENT PROCESS



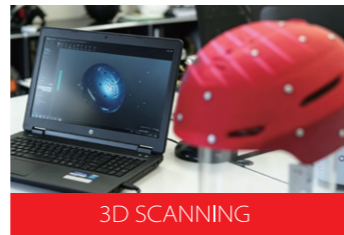
New Concept by Drawing



Make One Prototype by Hand



Polish Prototype



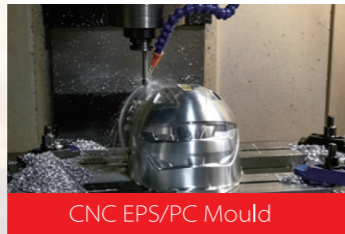
3D SCANNING



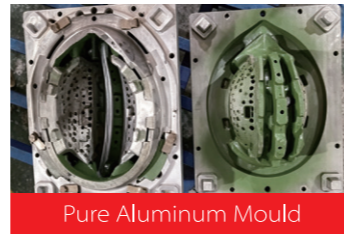
Edit 3D File on Comptuer



Print 3D Sample



CNC EPS/PC Mould



Pure Aluminum Mould



PC PRINTING



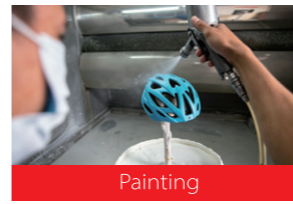
PC SILKSCRREN



PC VACCUM



ABB Robot PC Cutting



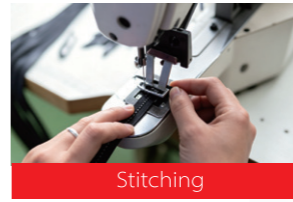
Painting



Assembling Line



EPS Thermofuse with PC



Stitching



Helmet Quality Testing



Loading Container

HELMET DEVELOPMENT PROCESS



CLIMBING SERIES

Lightweight, Breathable, Lightweight, Shock-resistant

MC-W306

Application: Climbing Helmets

For Ages: Child/Youth/Adult

Construction: Lightweight In-mold Technology

Size: S(51-54cm); M(55-58cm); L(58-61 cm)

Certification: CE EN12492

Features:

- + High Density EPS
- + Thick and Durable PC shell
- + Washable Soft Hot-press Inner Lining
- + Chin Padding
- + ITW Buckle

3
shell sizes



black/red gradient



black/red gradient



light grey



silver grey



black

MC-SY068

Application: Climbing Helmets
For Ages: Adult
Construction: Glue on Technology
Size: L(58-61cm)
Certification: CE EN12492

Features:

- + High Density Black EPP
- + High impact resistant ABS shell
- + Advanced Rear Adjustable Fit System
- + Washable Soft Hot-press Inner Lining
- + Chin Padding
- + ITW Buckle



black



black



khaki



purple



dark grey

MC-SY068L

Application: Climbing Helmets
For Ages: Adult
Construction: Glue on Technology
Size: L(58-61cm)
Certification: CE EN12492

Features:

- + High Density Black EPP
- + High impact resistant ABS shell
- + Advanced Rear Adjustable Fit System
- + Washable Soft Hot-press Inner Lining
- + Removable Anti-Scratch, Anti-UV Lens Visor
- + Chin Padding
- + ITW Buckle



black



light grey



ocean blue



olive green



khaki

MC-BT29

Application: Climbing Helmets

For Ages: Adult

Construction: Lightweight In-mold Technology

Size: L(55-61cm); XL(61-63cm)

Certification: CE EN 12492

Features:

- + High Density Black EPP
- + Thick and Durable PC shell
- + Washable Soft Hot-press Inner Lining
- + Chin Padding
- + ITW Buckle

2
shell sizes



black/orange



black/grey



black/orange



black/red



black/blue

MC-BT27

Application: Climbing Helmets

For Ages: Adult

Construction: Lightweight In-mold Technology

Size: L(58-61cm)

Certification: CE EN 12492

Features:

- + High Density White EPP
- + Thick and Durable PC shell
- + Washable Soft Hot-press Inner Lining
- + Chin Padding
- + ITW Buckle



white/blue



white/blue



white/orange



white/red



white/green