



**MAXWILL INDUSTRIAL LIMITED**

✉ [hanson.dai@maxhelmet.com](mailto:hanson.dai@maxhelmet.com)

[info@maxhelmet.com](mailto:info@maxhelmet.com)

☎ +86 13823039383

🌐 [www.maxhelmet.com](http://www.maxhelmet.com)

📍 NO. 32, HUANG SHA HE WEST ROAD,  
LIAOBU TOWN, DONGGUAN CITY, GUANGDONG, CHINA.



[www.maxhelmet.com](http://www.maxhelmet.com)



Wechat



WhatsApp

V  
M  
A  
X  
E  
T



**HELMET** 26-27

# INTRODUCTION

We are a rapidly growing sports goods enterprise, specializing in the design, development and manufacturing of bicycle helmets, ski helmets, skateboard helmets, speed ice skating helmets, equestrian helmets, water sports helmets and climbing helmets. We serve customers worldwide.

We are equipped with 5 EPS thermofusion machines, 3 vacuum plastic forming machines, 2 automatic painting workshops and 3 assembly lines. Our monthly production capacity reaches 50,000 helmets.

Our helmets have obtained certifications for various international safety standards, including US CPSC, ASTM F1447, ASTM F2040, ASTM F1849, as well as European CE EN1078, CE EN1077, CE EN1385, CE EN1384 and other standards. All products undergo strict testing before delivery. We firmly believe that quality is the lifeblood of our enterprise.

As a professional sports helmet supplier, we source raw materials globally and implement strict quality control in accordance with top international standards. We are committed to becoming a world-class quality supply chain and professional sports helmet provider in the sports and leisure industry.

We sincerely welcome customers from all over the world to cooperate with our factory.



# CONTENTS

<b>ROAD</b>	03-16	<b>WATER SPORTS</b>	81-90
<b>MTB</b>	17-24	<b>SKATEBOARD</b>	91-96
<b>E-BIKE</b>	25-36	<b>EQUESTRAIN</b>	97-100
<b>UNIVERSAL</b>	37-42	<b>CLIMBING</b>	101-106
<b>BMX/DOWNHILL</b>	43-48	<b>SHORT TRACK SPEED</b>	107-108
<b>CHILDREN</b>	49-56	<b>TRACK TIME TRAIL</b>	109-110
<b>SKI/SNOWBOARD</b>	57-80	<b>BASEBALL</b>	111-112



# HELMET DEVELOPMENT PROCESS



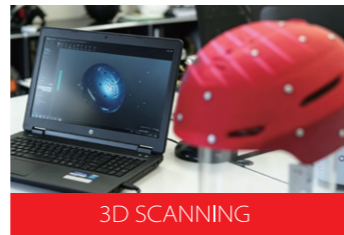
New Concept by Drawing



Make One Prototype by Hand



Polish Prototype



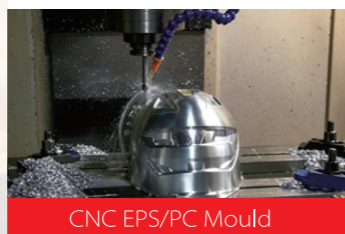
3D SCANNING



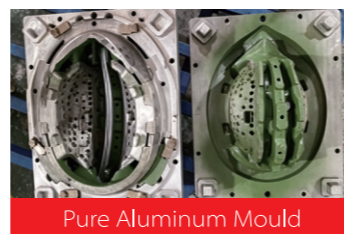
Edit 3D File on Comptuer



Print 3D Sample



CNC EPS/PC Mould



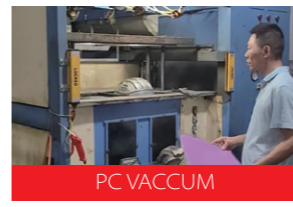
Pure Aluminum Mould



PC PRINTING



PC SILKSCRREN



PC VACCUM

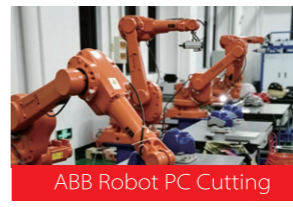
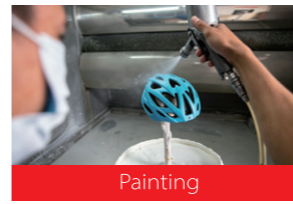


ABB Robot PC Cutting



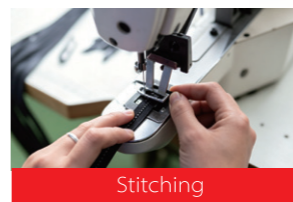
Painting



Assembling Line



EPS Thermofuse with PC



Stitching



Helmet Quality Testing



Loading Container

# HELMET DEVELOPMENT PROCESS





# SHORT TRACK SPEED SERIES

Streamlined, Aerodynamic, Lightweight

## MSS-802

**Application:** Short Track Speed Ice Skating Helmets

**For Ages:** Child/Youth/Adult

**Construction:** Lightweight In-mold Technology

**Size:** XS(51-54cm); S/M(55-58cm); L/XL(58-61cm)

**Certification:** CE EN1078

ASTM F1849-23

**Features:**

- + High Density EPS
- + Thick and Durable PC shell
- + Advanced Rear Adjustable Fit System
- + Washable Soft Hot-press Inner Lining
- + ITW Buckle
- + Chin Padding

**3**  
shell sizes



black



black



photochromic green



black carbon



light pink