



MAXWILL INDUSTRIAL LIMITED

✉ hanson.dai@maxhelmet.com

info@maxhelmet.com

☎ +86 13823039383

🌐 www.maxhelmet.com

📍 NO. 32, HUANG SHA HE WEST ROAD,
LIAOBU TOWN, DONGGUAN CITY, GUANGDONG, CHINA.



www.maxhelmet.com



Wechat



WhatsApp

V
M
A
X
E
T



HELMET 26-27

INTRODUCTION

We are a rapidly growing sports goods enterprise, specializing in the design, development and manufacturing of bicycle helmets, ski helmets, skateboard helmets, speed ice skating helmets, equestrian helmets, water sports helmets and climbing helmets. We serve customers worldwide.

We are equipped with 5 EPS thermofusion machines, 3 vacuum plastic forming machines, 2 automatic painting workshops and 3 assembly lines. Our monthly production capacity reaches 50,000 helmets.

Our helmets have obtained certifications for various international safety standards, including US CPSC, ASTM F1447, ASTM F2040, ASTM F1849, as well as European CE EN1078, CE EN1077, CE EN1385, CE EN1384 and other standards. All products undergo strict testing before delivery. We firmly believe that quality is the lifeblood of our enterprise.

As a professional sports helmet supplier, we source raw materials globally and implement strict quality control in accordance with top international standards. We are committed to becoming a world-class quality supply chain and professional sports helmet provider in the sports and leisure industry.

We sincerely welcome customers from all over the world to cooperate with our factory.



CONTENTS

ROAD	03-16	WATER SPORTS	81-90
MTB	17-24	SKATEBOARD	91-96
E-BIKE	25-36	EQUESTRAIN	97-100
UNIVERSAL	37-42	CLIMBING	101-106
BMX/DOWNHILL	43-48	SHORT TRACK SPEED	107-108
CHILDREN	49-56	TRACK TIME TRAIL	109-110
SKI/SNOWBOARD	57-80	BASEBALL	111-112



HELMET DEVELOPMENT PROCESS



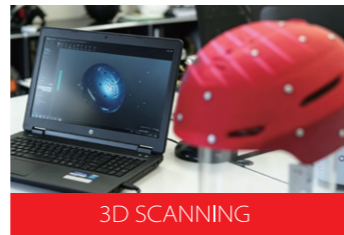
New Concept by Drawing



Make One Prototype by Hand



Polish Prototype



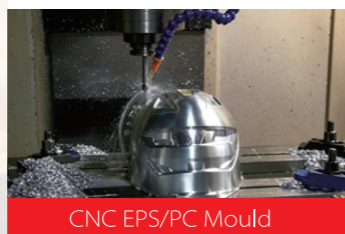
3D SCANNING



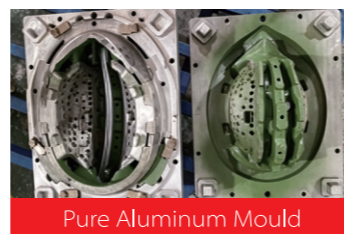
Edit 3D File on Comptuer



Print 3D Sample



CNC EPS/PC Mould



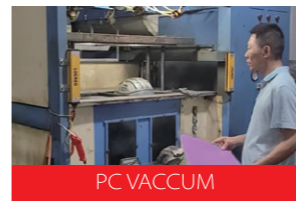
Pure Aluminum Mould



PC PRINTING



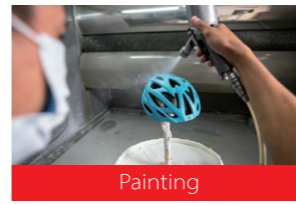
PC SILKSCRREN



PC VACCUM



ABB Robot PC Cutting



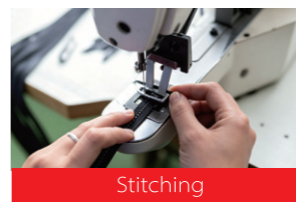
Painting



Assembling Line



EPS Thermofuse with PC



Stitching



Helmet Quality Testing



Loading Container

HELMET DEVELOPMENT PROCESS





WATER SPORTS SERIES

Durable, Water-resistant, Lightweight, Ventilated

MW-H8800

Application: Watersports Helmets

For Ages: Child/Youth/Adult

Construction: Glue on Technology

Size: XS(51-54cm); S(54-56cm); M(56-58cm)
L(58-60cm); XL(60-62cm)

Certification: CE EN1385

Features:

- + Cold Press Molding High Density EVA
- + High impact resistant ABS shell
- + Hard Ear Frame Protection
- + Advanced Rear Adjustable Fit System
- + Chin Padding
- + ITW Buckle
- + Soft Ear Covering is optional



ocean blue



electroplated iridescent



iridescent chameleon



electroplated rainbow

MW-H038

Application: Watersports Helmets

For Ages: Youth/Adult

Construction: Glue on Technology

Size: S(54-56cm); M(56-58cm)

L(58-60cm); XL(60-62cm); XXL(62-64cm)

Certification: CE EN1385

Features:

- + Cold Press Molding High Density EVA
- + High impact resistant ABS shell
- + Advanced Rear Adjustable Fit System
- + Chin Padding
- + ITW Buckle
- + Button-on Soft Ear Padding is optional



red



red



ocean blue



charcoal

MW-S17

Application: Watersports Helmets

For Ages: Child/Youth/Adult

Construction: Glue on Technology

Size: XS(51-54cm); S(54-56cm); M(56-58cm)

L(58-60cm); XL(60-62cm); XXL(62-64cm)

Certification: CE EN1385

Features:

- + Cold Press Molding High Density EVA
- + High impact resistant ABS shell
- + Advanced Rear Adjustable Fit System
- + Chin Padding
- + ITW Buckle
- + Button-on Soft Ear Padding is optional



yellow



yellow



blue



red

MW-XILE

Application: Watersports Helmets

For Ages: Youth/Adult

Construction: Glue on Technology

Size: S(54-56cm); M(56-58cm)

L(58-60cm); XL(60-62cm)

Certification: CE EN 1385

Features:

- + Cold Press Molding High Density EVA
- + High impact resistant ABS shell
- + Advanced Rear Adjustable Fit System
- + Chin Padding
- + ITW Buckle
- + Button-on Soft Ear Padding is optional



yellow



blue



red



black



MW-R050

Application: Watersports Helmets

For Ages: Youth/Adult

Construction: Glue on Technology

Size: S(54-56cm); M(56-58cm)

L(58-60cm); XL(60-62cm)

Certification: CE EN 1385

Features:

- + Cold Press Molding High Density EVA
- + High impact resistant ABS shell
- + Hard Ear Frame Protection
- + Advanced Rear Adjustable Fit System
- + Chin Padding
- + ITW Buckle
- + Soft Ear Covering is optional



black



blue



red



yellow



MW-H2108

Application: Watersports Helmets

For Ages: Youth/Adult

Construction: Glue on Technology

Size: S(54-56cm); M(56-58cm)

L(58-60cm); XL(60-62cm)

Certification: CE EN1385

Features:

- + Cold Press Molding High Density EVA
- + High impact resistant ABS shell
- + Half Face Shell with Higher Protection
- + Advanced Rear Adjustable Fit System
- + Chin Padding
- + ITW Buckle
- + Soft Ear Covering is optional



orange

ocean blue

black

+ cap-lamp holder
+ camera holder

MW-R030

Application: Watersports Helmets

For Ages: Youth/Adult

Construction: Glue on Technology

Size: S(54-56cm); M(56-58cm)

L(58-60cm); XL(60-62cm)

Certification: CE EN1385

Features:

- + Cold Press Molding High Density EVA
- + High impact resistant ABS shell
- + Half Face Shell with Higher Protection
- + Advanced Rear Adjustable Fit System
- + Chin Padding
- + ITW Buckle



red

yellow

blue

MW-R039

Application: Watersports Helmets

For Ages: Youth/Adult

Construction: Glue on Technology

Size: S(54-56cm); M(56-58cm)

L(58-60cm); XL(60-62cm)

Certification: CE EN 1385

Features:

- + Cold Press Molding High Density EVA
- + High impact resistant ABS shell
- + Advanced Rear Adjustable Fit System
- + Chin Padding
- + ITW Buckle
- + Button-on Soft Ear Padding is optional



red



red



blue



orange

MW-R070

Application: Watersports Helmets

For Ages: Youth/Adult

Construction: Glue on Technology

Size: S(54-56cm); M(56-58cm)

L(58-60cm); XL(60-62cm)

Certification: CE EN 1385

Features:

- + Cold Press Molding High Density EVA
- + High impact resistant ABS shell
- + Chin Padding
- + ITW Buckle
- + Integrated-in Soft Ear Padding with Inner Padding



blue



blue



red



yellow

